



SEPTEMBER 2025 MONTHLY UPDATE

Mary R. Harville, President and CEO

Fueling Imagination and Funding Education for all Kentuckians.

SEPTEMBER AT A GLANCE

The Kentucky Lottery continues to roll out new state-of-the-art equipment upgrades at all 3,500 retail stores across the state. To succeed in our mission, we know our retail partners must have the newest, most streamlined technology that makes selling and buying lottery products easier and more efficient than ever.

All retailers will receive all new terminals (pictured right), ticket checkers, printers, and marketing monitors. A dual cellular network will replace the satellite service for all retailers as well. In addition, 850 new vending machines will be added in designated retail stores across the state.



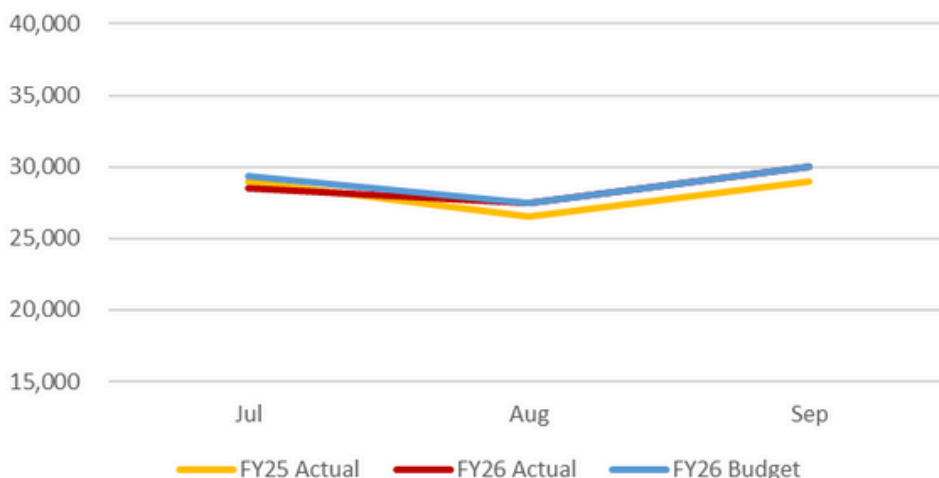
- September sales totaled \$194.1 million, which is \$33.6 million or 20.9% more than last year at this time. Higher than normal ticket sales this month can be attributed to the nearly \$1.8 billion Powerball jackpot, the second largest in Powerball history. The jackpot was hit in early September with winners in Missouri and Texas.
- Scratch-off sales were \$72.9 million, which is \$10.8 million or 17.3% more than last year at this time.
- Draw game sales totaled \$48.2 million, which is \$11.0 million or 29.7% more than last year at this time.
- September's iLottery Instant Play sales were \$72.9 million, which is \$11.7 million or 19.2% more than last year at this time.

The Kentucky Lottery 2025 event season has come to a close. The KLC had a presence at the Bourbon and Beyond music festival in Louisville.

For the first time, draw game tickets, including the popular Kentucky Bourbon Trail® Fast Play ticket, were available for purchase in vending machines. Lottery staff was on-hand to assist players, and many first-time players won big.



Total Cash Transfers to the Commonwealth ('000s)



September Prior	29,000
September Actual	30,000
September Budget	30,000

	FY26 September 2025 ACTUAL	FY25 September 2024 ACTUAL	FY26 September 2025 BUDGET
Sales:			
Gross Instant at Retail	72,933	62,159	80,234
Gross Draw at Retail	43,678	34,673	33,692
iLottery	77,445	63,667	73,782
Ticket Sales	194,056	160,499	187,708
Prize Expense	142,288	115,853	138,807
Other Direct Costs	11,311	9,796	11,903
Gross Profit	40,457	34,850	36,998
	-	-	-
Operating Expenses	2,998	3,744	3,607
	-	-	-
Operating Income	37,459	31,106	33,391
	-	-	-
Non-Operating Income	153	206	113
	-	-	-
Net Income With Unclaimed Prizes	37,612	31,312	33,504
Unclaimed Prizes	(601)	(2,749)	(2,100)
Net Income	37,011	28,563	31,404

	FY26 YTD 9/30/25 ACTUAL	FY25 YTD 9/30/24 ACTUAL	FY26 YTD 9/30/25 BUDGET
Sales:			
Gross Instant at Retail	208,303	217,551	232,008
Gross Draw at Retail	117,235	108,237	105,800
iLottery	224,682	193,750	219,224
Ticket Sales	550,220	519,538	557,032
Prize Expense	408,464	383,752	414,840
Other Direct Costs	32,895	32,653	34,793
Gross Profit	108,861	103,133	107,399
Operating Expenses	9,822	9,656	10,637
Operating Income	99,039	93,477	96,762
Non-Operating Income	481	588	336
Net Income With Unclaimed Prizes	99,520	94,065	97,098
Unclaimed Prizes	(1,755)	(3,547)	(2,900)
Net Income	97,765	90,518	94,198

LOOKING AHEAD



The highly anticipated Holiday Scratch-offs will make their debut in October. Seven new Scratch-offs will have a combined total of over \$123.2 million in cash prizes.

Price points include \$1, \$2, \$3, \$5, \$10, \$20 and \$50. Players will be introduced to holiday PAC-MAN™. A second chance promotion is also associated with this licensed game.



Fiscal Year 2025 marks the 14th consecutive year that the Kentucky Lottery has broken sales records with over \$2.2 billion in total sales. Read about all the Lottery's successes in the upcoming FY25 Annual Report.



@KYLOTTERY

KYLOTTERY.COM

FOR MORE INFORMATION:

Mary R. Harville
Kentucky Lottery President and CEO
(502) 560.1576
mary.harville@kylottery.com

